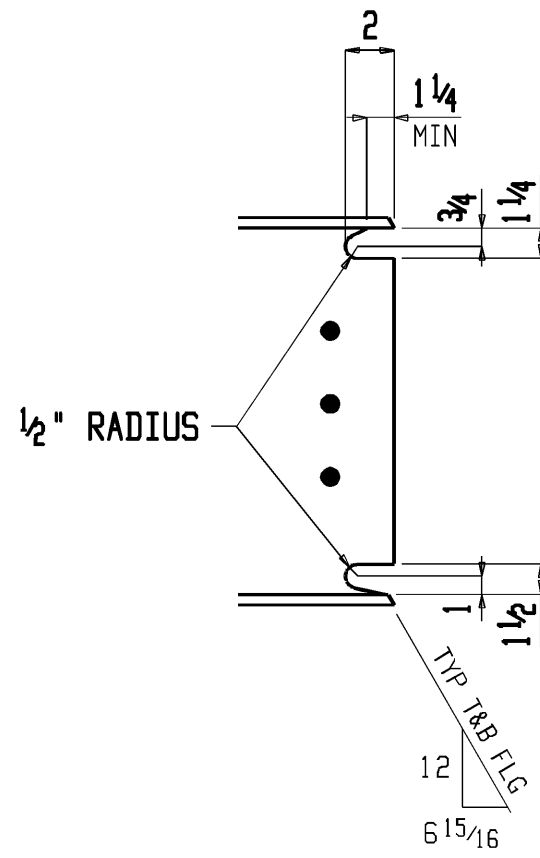
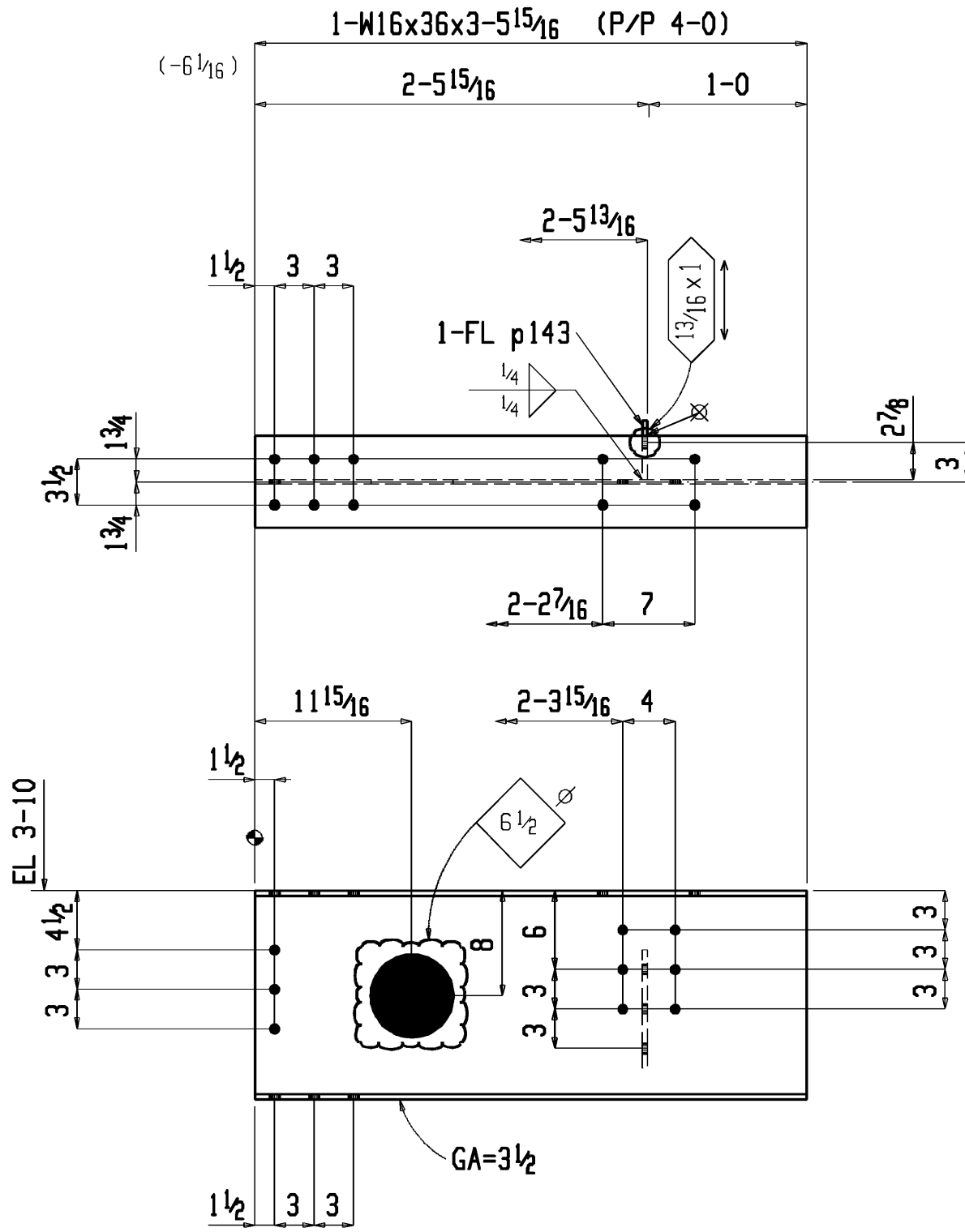


ONE BEAM SB1

W 15 7/8 x 5 1/16  
F 7 x 7 1/16  
K 1 1/8 x 1 3/16

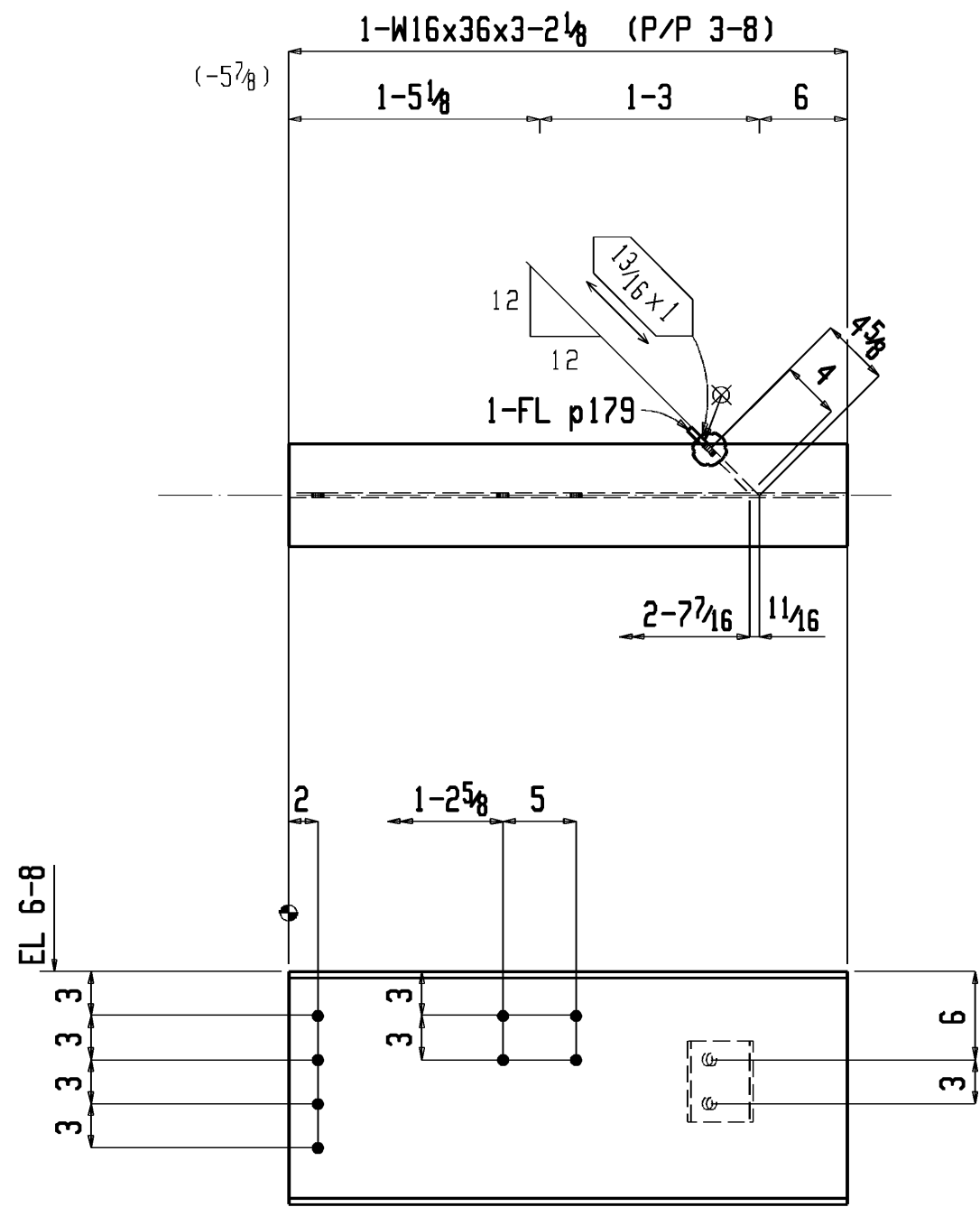


DETAIL 'A'  
SB1



ONE BEAM SB2

W 15 7/8 x 3 1/16  
F 7 x 7 1/16  
K 1 1/8 x 1 3/16



ONE BEAM SB3

W 15 7/8 x 5 1/16  
F 7 x 7 1/16  
K 1 1/8 x 1 3/16

SHOP NOTES:  
1) INDICATES SPOT OF PAINT

SHOP BILL OF MATERIAL

Total weight : 387

SEQ	SEQ	NO	QUAN	MARK	QUAN	ITEM	LENGTH	WEIGHT	GRADE	REMARKS	PR
1	1	SB1	ONE			BEAM		143			
		SB1	1			W16x36	3	6 9/16	128	A992	
		p149	2			PL 3/8 x 3 3/8	1	2 3/8	10	A36	
		a45	1			L4x3x5 1/16	0	8 1/2	5	A36	
						FIELD BOLTS					
		7	TC 3/4 Dia F1852				0	2		1HD WASH	
1	1	SB2	ONE			BEAM		126			
		SB2	1			W16x36	3	5 15/16	122	A992	
		p143	1			FL 3/8 x 4 1/2	0	9	4	A36	
						FIELD BOLTS					
		6	TC 3/4 Dia F1852				0	2 1/4		2HD, 2 WASH	
		6	TC 3/4 Dia F1852SC				0	2 1/4		1HD WASH	
		7	TC 3/4 Dia F1852				0	2		1HD WASH	
1	1	SB3	ONE			BEAM		118			
		SB3	1			W16x36	3	2 1/8	114	A992	
		p179	1			FL 3/8 x 5 1/2	0	6	3	A36	
						FIELD BOLTS					
		4	TC 3/4 Dia F1852				0	2		1HD WASH	

REF.DWG. -SEE B.O.M.

SURFACE PREPARATION: NONE	OPEN HOLES 13/16 $\varnothing$ U/N									AMERICAN INSTITUTE OF STEEL CONSTRUCTION PROJECT: STRUCTURAL STEEL TEACHING SCULPTURE	
SHOP PAINT: NONE	ALL MAT'L A36 U/N									CUSTOMER: AMERICAN INSTITUTE OF STEEL CONSTRUCTION	
										DRAWN RAS 07/2010 SHOP ORDER XXXX	
	WELD = E70XX ELECTRODE	NO.	REVISION	CODE	BY	DATE	CHECKED CT	SHEET NO. 5			